



# Programmers Guide: FreeRide Configuration Manual

---

Web-Based Configuration for the FR200 and FR210

<b>GETTING STARTED...</b>	<b>4</b>
If the configuration screen does not appear, make sure: .....	4
<b>CONFIGURATION.....</b>	<b>5</b>
Configuring The Phone and Updating.....	6
<b>SUMMARY OF THE CONFIGURATION MENUS.....</b>	<b>6</b>
Info Menu .....	7
Network Menu .....	7
Audio Menu .....	7
H.323 Menu.....	7
Dial Plan Menu.....	8
Scripts Menu .....	8
Upgrade Menu .....	8
Reboot.....	8
<b>CONFIGURATION MENU PARAMETER FUNCTIONS .....</b>	<b>9</b>
<b>NETWORK CONFIGURATION.....</b>	<b>9</b>
Boot Wired/Wireless .....	10
DHCP.....	10
Manual Configuration.....	10
IP Address .....	10
Subnet Mask .....	10
Default Gateway .....	10
Boot Host/Boot File .....	10
User Name/Password.....	10
SNTP Server .....	10
Minutes West of Greenwich .....	10
<b>AUDIO CONFIGURATION.....</b>	<b>11</b>
Codec.....	12
Jitter Buffer.....	12
DTMF (Dual Tone Multi-Frequency).....	12
Flash-Hook Duration.....	12
Silence Suppression .....	12

<b>H.323 CONFIGURATION .....</b>	<b>13</b>
Don't use gatekeeper .....	13
Register with Gatekeeper .....	13
Gatekeeper Address .....	14
Alias .....	14
Display Name .....	14
H.323 Fast Start .....	14
H.323 Auto Answer .....	14
<b>DIAL PLAN CONFIGURATION.....</b>	<b>15</b>
Number .....	16
Min Digits.....	16
Max Digits.....	16
Strip digits .....	16
Add Digit.....	16
<b>SCRIPTS CONFIGURATION .....</b>	<b>17</b>
FTP Server Address .....	17
User Name .....	17
Password .....	17
Script Filename.....	17
<b>THE UPGRADE APPLICATION MENU.....</b>	<b>18</b>
FTP Server Address .....	18
User Name .....	18
Password .....	18
Refers to the password needed to access the FTP server.....	18
Bootrom Filename.....	18
Application Filename .....	18
<b>CONFIGURATION EXAMPLES .....</b>	<b>19</b>
FreeRide to FreeRide or other H.323 endpoint.....	19
FreeRide to Analog POTS on the PSTN through a Gateway.....	21
FreeRide Connected to a Gatekeeper .....	22
FreeRide to NetMeeting .....	24
<b>CONTACTING TECH SUPPORT .....</b>	<b>25</b>

*The windows based Configbuilder program can no longer be used to configure the FreeRide, all configuration must be done through the web interface.*

## **GETTING STARTED...**

To begin installation, attach the FreeRide to a valid Ethernet network connection through its RJ-45 port and then plug in its power supply. Upon activation, the FreeRide will ring once and display its IP address after booting\*.

To enter the phones configuration mode, a terminal on the same network must be set to interact within the same domain as the initial IP address (10.0.1.10). Once the terminal is configured, use it to launch a browser and type the FreeRides IP address in the navigation bar. The FreeRide "Info" page should be displayed, listing the FreeRides default parameter setting. The FreeRide must be powered up in order to access configurations through the web interface.

\*If a DHCP server is present, the FreeRide will obtain and display an IP address from it, otherwise the FreeRide will display its initial address.

### **If the configuration screen does not appear, make sure:**

- The phone is powered up.
- The Ethernet cable is properly connected.
- Attempt to "ping" the FreeRide to determine if the terminal used for configuration is located on the same network.
- Try rebooting the FreeRide, waiting 20 seconds, and then testing communication again.

# CONFIGURATION

The Freerides initial IP address is 10.0.1.10.

When accessed, the web interface will initially display the FreeRides "info" page, listing its existing parameters. The list of links located at the left of the screen is used to navigate these parameters and configure them.

To change any of the FreeRides configurations select the corresponding link from the Configuration Menu Headings and edit the necessary parameters. A brief description of each menu and its parameters is listed below.



The screenshot shows the e-tel FreeRide web interface. The top left corner features the e-tel corporation logo. The top right corner displays 'FreeRide'. A navigation menu on the left side includes links for Info, Network, Audio, H.323, Local Line, Dial Plan, Scripts, Upgrade, and Reboot. The main content area is titled 'Info' and contains a table of configuration parameters.

DHCP	Disabled
IP address	255.255.255.255
Subnet Mask	255.255.255.255
Default Gateway	255.255.255.255
Use gatekeeper	False
GK address	255.255.255.255
Alias (Line 1)	4018261520
Alias (Line 2)	4018261520
Display Name	e-tel FreeRide
Codec	G.711mu law 20ms
Nom Delay	40
Max Delay	30
DTMF Relay	On
UII Type	Q 931 Keypad
Silence Suppression	Disabled
Flash Duration	700ms
Fast Start	On
Auto Answer	Off
PLAR (line 1)	None
PLAR address (line 1)	None
PLAR (line 2)	None
PLAR address (line 2)	None
Software Revision	1.0
Hardware Revision	1.0

## **Configuring The Phone and Updating...**

After assigning values to the parameters listed on the configuration screens, they are stored by clicking the "configure" button located at the bottom of each menu pages. **Once the browser's status bar indicates the operation successful, the phone must be rebooted from the links listing to commit the changes and save them in memory.**

**Rebooting the phone requires a user name and password. These are currently set to "username" and "password"**

Once the phone reboots and displays it's IP address, refresh the Browser to display the changes made.

If the IP address is changed, the initial IP address is no longer valid. Only the new address can be used to reach the phones configuration mode. If the new address is lost or forgotten, reboot the phone and the address will be displayed.

## **SUMMARY OF THE CONFIGURATION MENUS**

The following is a list of the FreeRides configuration menus and a brief description of each.

## Info Menu

Lists the FreeRides existing settings for its configurable features.

## Network Menu

Used to set the FreeRides network parameters for communication over the LAN.

Configurable parameters:

- Wired or wireless transmission
- Manual configuration or DHCP
- IP address, subnet mask, and Default Gateway

*If the IP address is changed, the initial IP address is no longer valid. Only the new address can be used to reach the phones configuration mode. If the new address is lost or forgotten, reboot the phone and the address will be displayed.*

- Boot Host and Boot File
- User Name and Password
- Time Server and Time Zone

## Audio Menu

Used to configure audio settings such to ensure QoS over varied networks.

Configurable parameters:

- Codec
- Jitter Buffer
- DTMF signaling
- Silence suppression

## H.323 Menu

This menu is used to configure parameters that are specific to the H.323 protocol.

Configurable parameters:

- Gatekeeper or non-gatekeeper navigation
- Gatekeeper Address
- Line alias
- Caller ID display name
- Fast Start
- Auto Answer

## Dial Plan Menu

This menu allows the user to configure a dial plan for IP device recognition.

Configurable parameters (relates to other IP devices):

- Number, Digits, Strip Digits, and Address
- Dial Plan display table

## Scripts Menu

This menu can be used to download configuration scripts, it is rarely used and is therefore only listed at the bottom of the pages.

Configurable parameters:

- FTP Address, User name, Password, Filename

## Upgrade Menu

This menu can be used to remotely perform upgrades to the FreeRide, it is rarely used and is therefore only listed at the bottom of the pages.

Configurable parameters:

- FTP server address, User name and Password

## Reboot

Reboots the phone to commit changed parameters. **Rebooting the phone requires a user name and password. These are currently set to "username" and "password"**

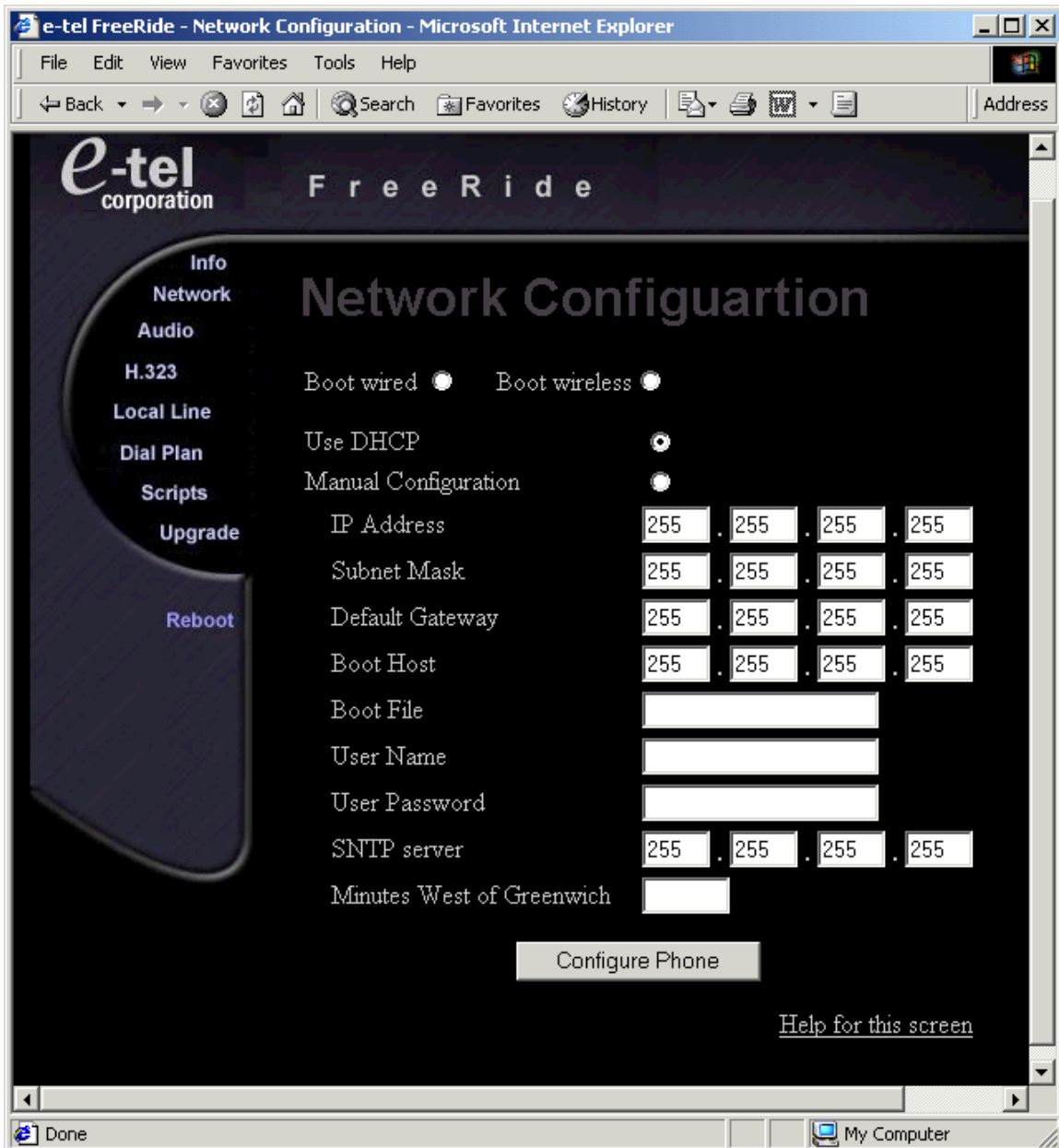


# CONFIGURATION MENU PARAMETER FUNCTIONS

In this section, each parameter and its function is documented and explained.

## NETWORK CONFIGURATION

The FreeRides network configurations must be set on this screen for communication over the LAN.



### **Boot Wired/Wireless**

This option can only be used if the FreeRide is equipped with a wireless PCM/CIA card, but must be selected if wireless use is intended.

### **DHCP**

When activated, the FreeRide will obtain its parameters from a DHCP server.

### **Manual Configuration**

Allows access to the FreeRides network parameters. If selected, **IP address**, **Subnet mask** and **Default gateway** must be configured.

### **IP Address**

This is the IP address of the FreeRide telephone.

*If the IP address is changed, the initial IP address is no longer valid. Only the new address can be used to reach the phones configuration mode. If the new address is lost or forgotten, reboot the phone and the address will be displayed.*

### **Subnet Mask**

This is the subnet mask of the FreeRide.

### **Default Gateway**

This is the default gateway that will be used for IP routing to other networks. This should not be confused with some other type of gateway.

### **Boot Host/Boot File**

These parameters are used only to load updates into the phone.

### **User Name/Password**

These parameters are used in conjunction with the loading updates onto the phone, **these are not the "reboot" user name and password. Those are currently set to "username" and "password"**

### **SNTP Server**

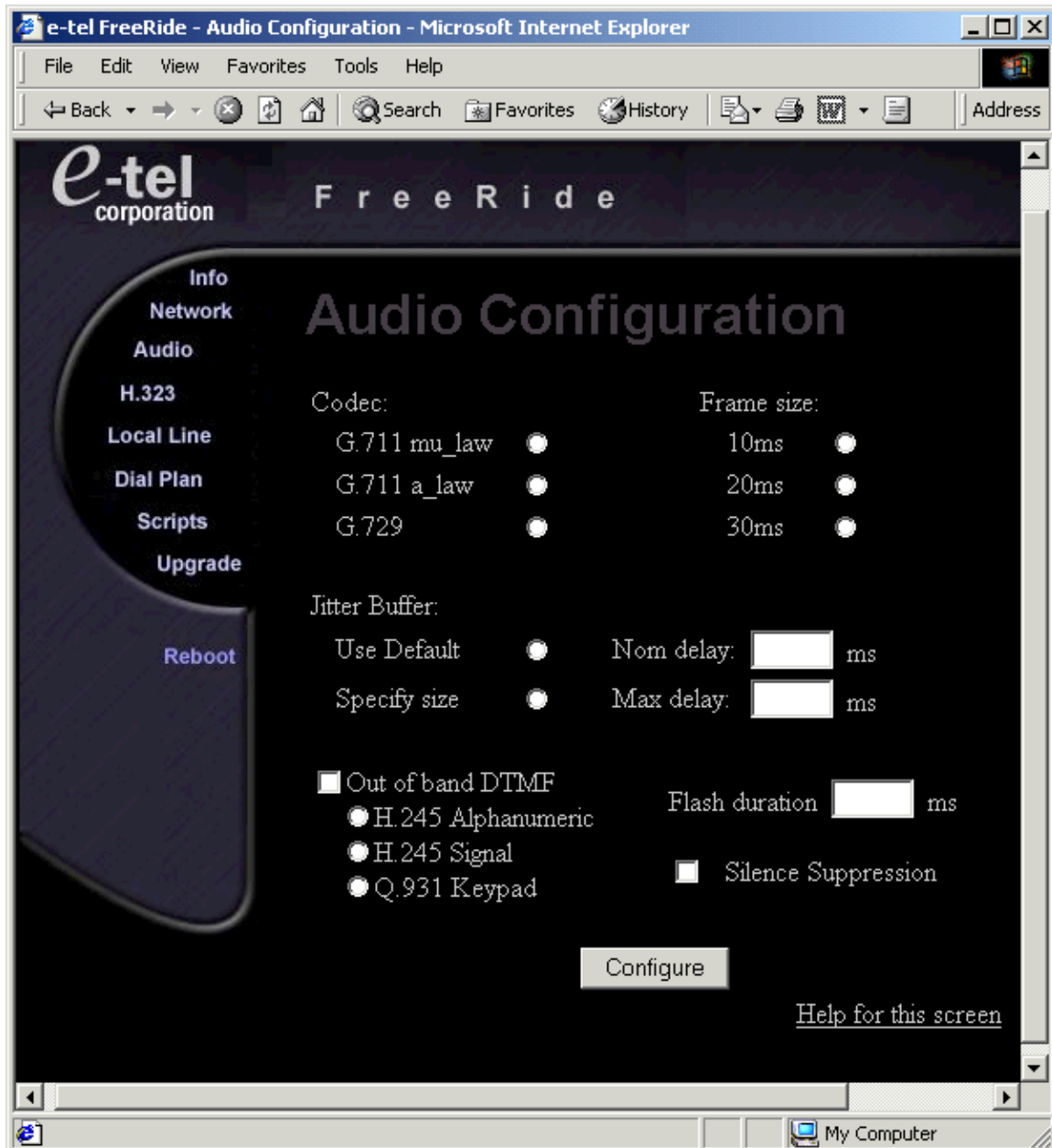
If selected, the FreeRide will attempt to get the proper time and date settings from a timeserver upon boot and then pass that data to the phone top. If left blank, this feature is disabled.

### **Minutes West of Greenwich**

This parameter must be set in conjunction with the timeserver setting.

## AUDIO CONFIGURATION

The FreeRides audio configurations must be set on this page to ensure QoS over varied networks.



## **Codec**

The Voice Coding Algorithm and Frame Size may be chosen from the *Codec* listing provided. Different Codecs provide different varying levels of voice data compression. G.711 provides 64 kbit/s and is recommended in for applications where there is a large amount of available bandwidth. G.729 provides 8kbit/s voice compression, to leverage available bandwidth in applications with limited resources.

## **Jitter Buffer**

For optimum performance, Jitter Buffer can be changed to leverage a networks available bandwidth. The default for this setting is 2x frame size for nominal delay and 4x frame size for maximum delay.

## **DTMF (Dual Tone Multi-Frequency)**

This parameter is dependant on codec selection. When employing any codec other than G.711, out of band signaling is recommended. If out of band signaling is selected, the user must choose between H.245 Alphanumeric, H.245 Signal, or Q.931 keypad transmission methods depending on network configuration.

## **Flash-Hook Duration**

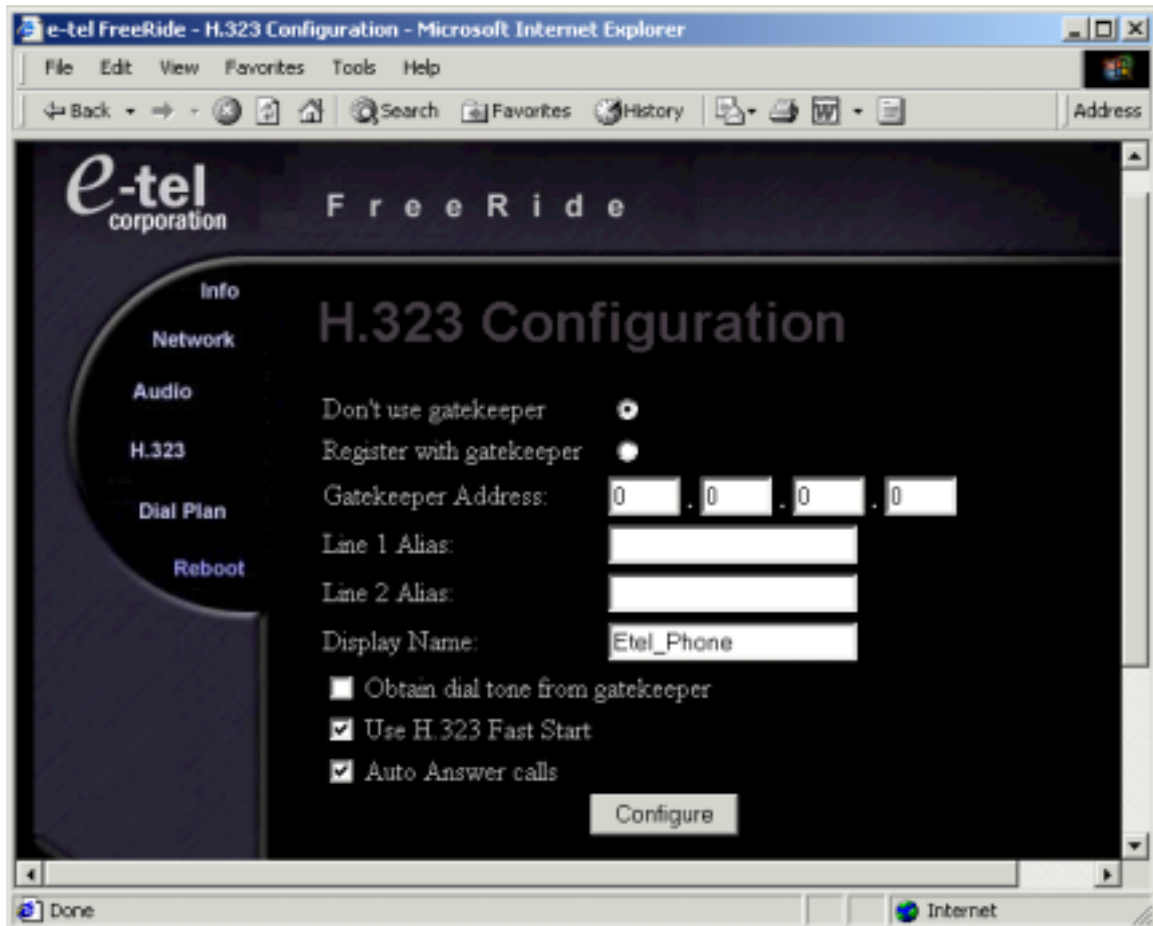
Flash-hook duration is rarely an issue. When employing a phone, the setting should remain at 700ms. If using a gateway, this parameter should only be changed if the user detects a conflict with their networks release times.

## **Silence Suppression**

In order to save bandwidth, Silence Suppression, also called VAD (Voice Activity Detection) may be used to stop the transmitting of voice packets during periods of silence.

## H.323 CONFIGURATION

The FreeRides H.323 parameters must be set in this menu for proper interaction with other H.323 entities.



### Don't use gatekeeper

This setting may be turned on or off. If the setting is selected then the rest of the gatekeeper settings are irrelevant.

### Register with Gatekeeper

If this setting is selected, be sure to also set the **gatekeepers address** and the **registration alias** of the FreeRide.

### **Gatekeeper Address**

Enter the IP address of the H.323 gatekeeper here. The phone must have knowledge of the gatekeeper's whereabouts in order to register with it.

### **Alias**

The value of this text box will be used to register the FreeRide with a Gatekeeper, and as the number displayed in the caller ID number field. If a gatekeeper is not used, then this parameter does not have to be set, but it is necessary for passing on caller ID information properly in non-gatekeeper environments. Enter the desired caller ID display name into the **Display name** textbox.

### **Display Name**

Enter the desired caller ID display name into this textbox.

### **H.323 Fast Start**

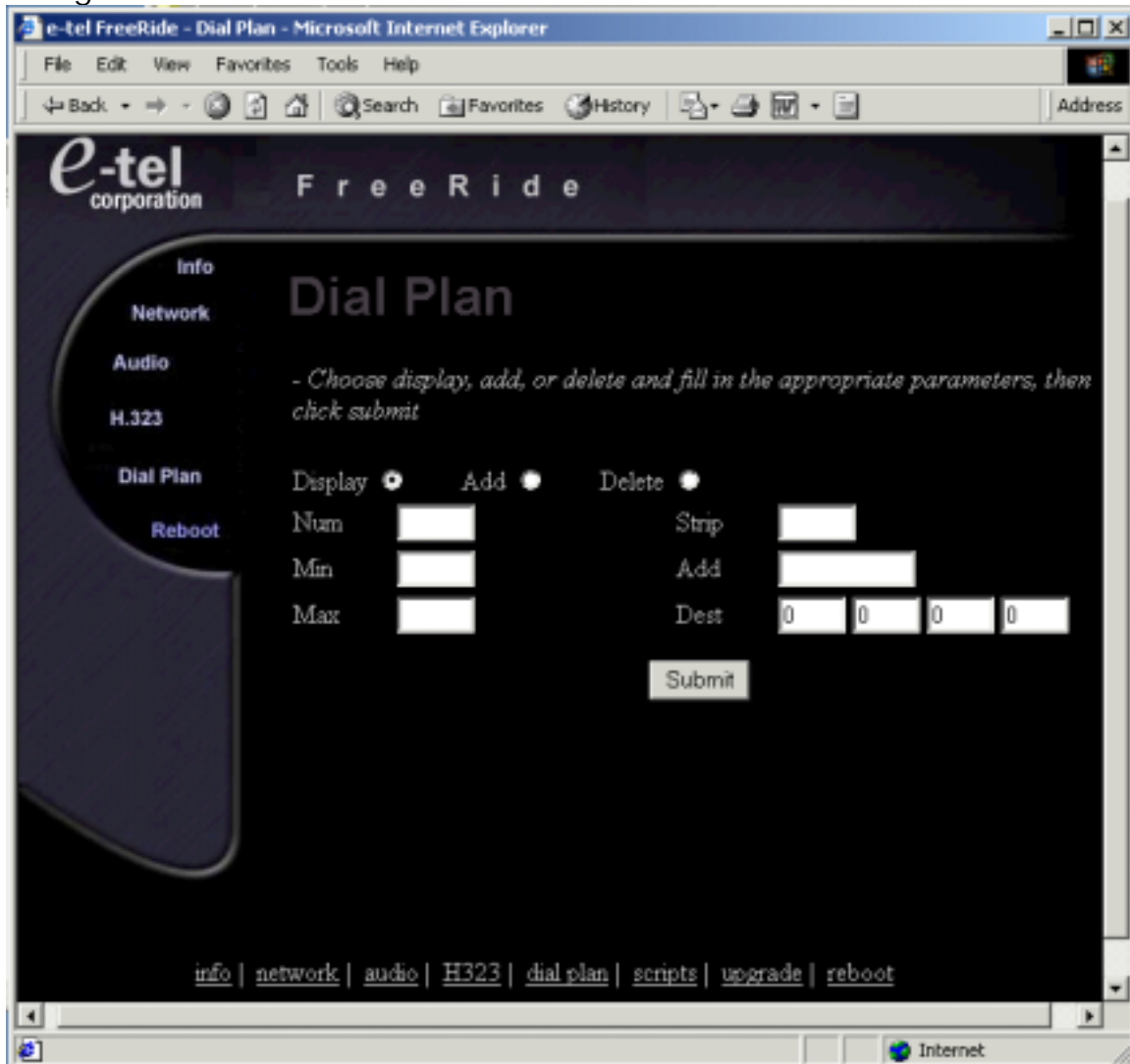
If the H.323 devices on the network are H.323v2 compliant, and support Fast Start procedures, then check this setting. During Fast Start call setup, information is exchanged and media channels are set up without the use of H.245 channels.

### **H.323 Auto Answer**

Auto answer may be used to allow a connection to be accepted and call processing to continue before the telephone is taken off hook. This may provide a quicker response on off-hook, but it may not be the desired setting for systems that need to make decisions based on whether or not the called party answered the phone. If it is necessary to know whether or not the phone is answered, then this setting should not be checked.

## DIAL PLAN CONFIGURATION

This menu allows the user to configure a dial plan for IP device recognition.



In most cases, a device will exist on the network that has knowledge of the whereabouts of the endpoints on the network, and is capable of address translation between these endpoints. This device is normally some type of gatekeeper or gateway. If the gatekeeper is present, then the FreeRide may send all of its digits to it for address translation. If the gatekeeper is not present, then the FreeRide must be aware of the location of every endpoint on the network that it will initiate calls to.

**Number**

A number that may be dialed.

**Min Digits**

The minimum number of digits that will cause the end of a dial string.

**Max Digits**

The maximum number of digits that may be dialed before the end of a dial string.

**Strip digits**

The number of digits that will be stripped from the beginning of the dial string before the digits are sent in call setup.

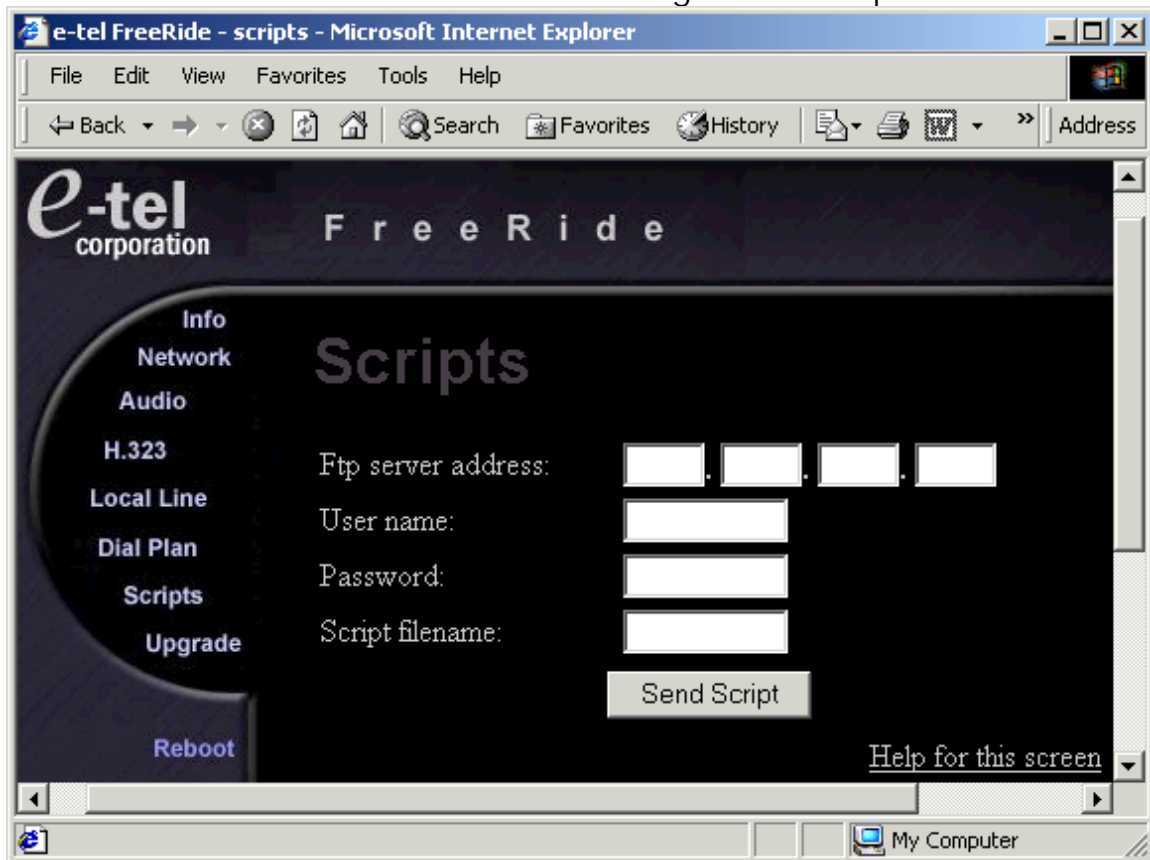
**Add Digit**

The digits entered in this box will be added to the beginning of the dial string before the digits are sent in call setup. **This parameter should be left blank if no digits are to precede the call.**



## SCRIPTS CONFIGURATION

This menu can be used to download configuration scripts.



### FTP Server Address

Enter the address of the FTP server that configuration scripts can be obtained from.

### User Name

Refers to the user name needed to access the FTP server.

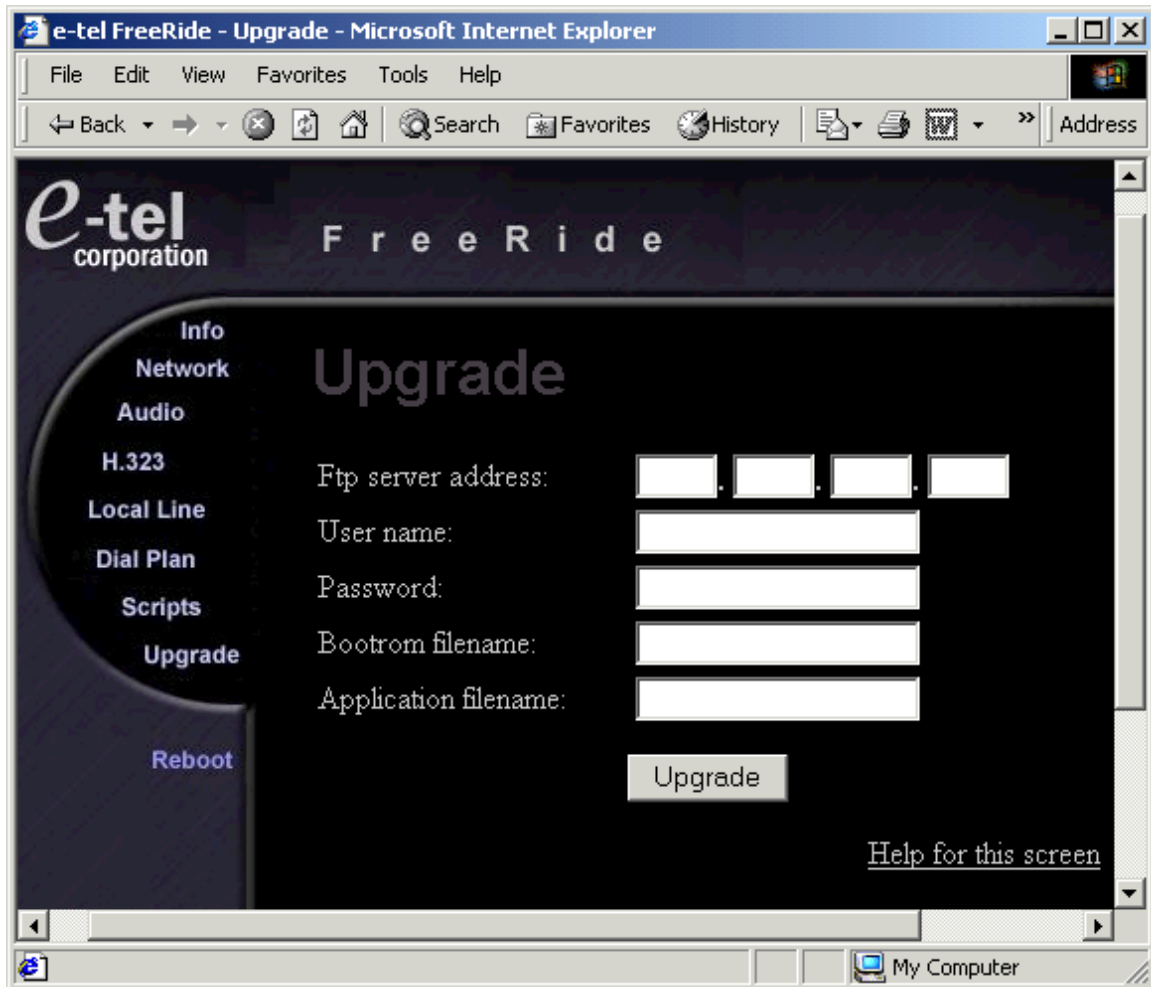
### Password

Refers to the password needed to access the FTP server.

### Script Filename

Enter the name of the target file that contains the configuration scripts.

## THE UPGRADE APPLICATION MENU



The screenshot shows a web browser window titled "e-tel FreeRide - Upgrade - Microsoft Internet Explorer". The browser's address bar is empty. The main content area has a dark background with the "e-tel corporation" logo in the top left and "FreeRide" in the top center. A vertical navigation menu on the left contains the following items: Info, Network, Audio, H.323, Local Line, Dial Plan, Scripts, Upgrade (highlighted in blue), and Reboot. The main content area is titled "Upgrade" and contains the following form fields and buttons:

- Ftp server address: [ ] . [ ] . [ ] . [ ]
- User name: [ ]
- Password: [ ]
- Bootrom filename: [ ]
- Application filename: [ ]
- Upgrade button
- [Help for this screen](#)

The Windows taskbar at the bottom shows the "My Computer" icon.

### FTP Server Address

Enter the address of the FTP server that upgrade information can be obtained from.

### User Name

Refers to the user name needed to access the FTP server.

### Password

Refers to the password needed to access the FTP server.

### Bootrom Filename

Enter the name of the target file that contains the updates.

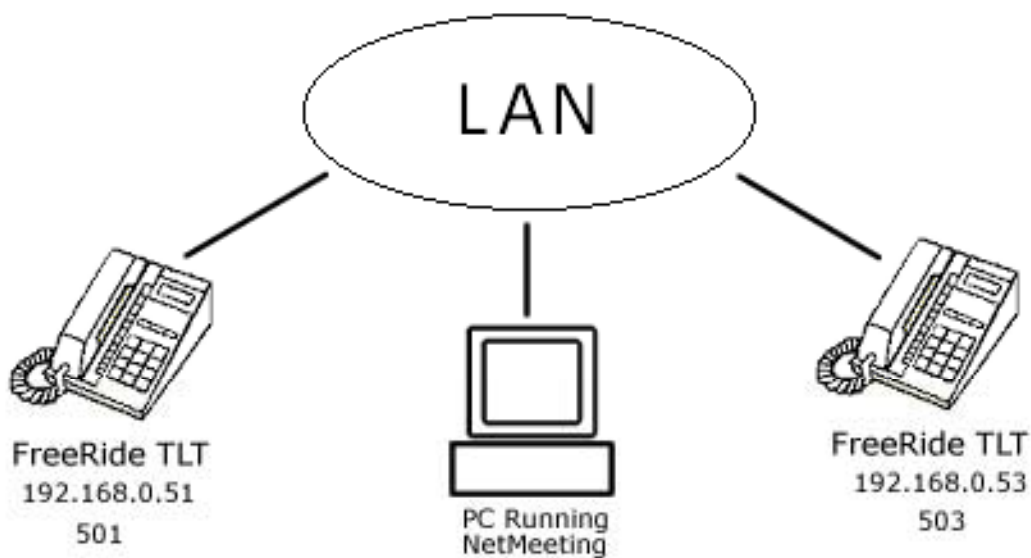
### Application Filename

Enter the name of the target application that contains the updates.

## CONFIGURATION EXAMPLES

### FreeRide to FreeRide or other H.323 endpoint

This example describes the networked configuration of two FreeRide telephones, which may make and receive calls between one another across a LAN connection. FreeRide telephones may also make and receive calls with any H.323 standards compliant endpoint.



This example assumes the following...

#### ***IP Phone 1***

IP Address = 192.168.0.51

Phone Number = 501

#### ***IP Phone 2***

IP Address = 192.168.0.53

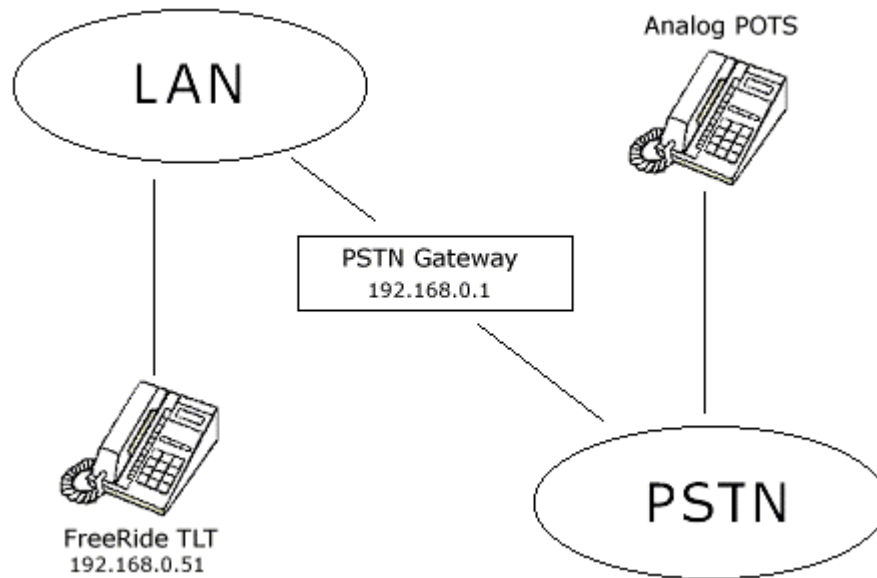
Phone Number = 503

Both phones must be given values for the following parameters based on the information above.

- IP Address and subnet mask
- Default Gateway (if phones reside on different networks or network segments)
- A dial plan which contains the phone number and IP address of the called phone
- Codecs and Frame Size must match

## FreeRide to Analog POTS on the PSTN through a Gateway

The example describes the configuration of a FreeRide telephone, which will make and receive calls with an analog POTS on the PSTN. Other configuration changes may be necessary depending upon the requirements of the PSTN Gateway.



The following assumptions are made...

IP Address of FreeRide = 192.168.0.51

IP Address of PSTN Gateway = 192.168.0.1

Telephone Number of FreeRide = 501

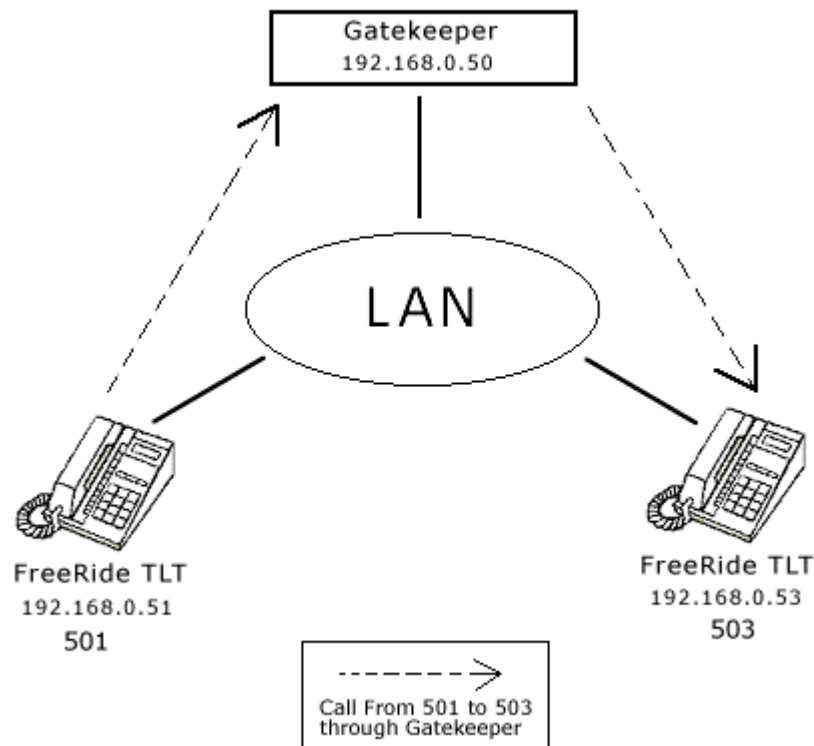
PSTN Gateway will expect the dialed digit 9 for a hop-off call

The following parameters must be configured...

- IP Address
- The Dial Plan must contain an entry for dialed digit '9' with the destination address that matches the IP address of the PSTN Gateway. This will cause the digit 9 to be sent to the PSTN Gateway, which in turn will allow calls to be made over the PSTN.
- Codecs and Frame Size must match the requirements of the PSTN Gateway

## FreeRide Connected to a Gatekeeper

The following example describes the configuration of an e-tel FreeRide set up to make and receive calls through a Gatekeeper. Although it is not necessary to use a Gatekeeper to make and receive calls with FreeRide telephones and other H.323 endpoints, it is highly recommended. Settings may vary depending upon the specific Gatekeeper.



The following is assumed...

### ***IP Phone 1***

IP Address = 192.168.0.51

Phone Number = 501

### ***IP Phone 2***

IP Address = 192.168.0.53

Phone Number = 503

### **Gatekeeper**

IP Address = 192.168.0.50

The following parameters must be configured...

- IP Address
- GK must be enabled and Address must be set
- Alias must be set (usually the GK will use the alias as the phone number.)
- Codecs and Frame Size must be set appropriately

## FreeRide to NetMeeting

The FreeRide telephone may make and receive calls to and from NetMeeting Clients. To allow the FreeRide to make direct IP calls to NetMeeting, configure the FreeRide to make calls to another endpoint in the usual manner. Simply add an address entry to the Dial Plan with any phone number you choose and the IP Address of the PC with NetMeeting. To call NetMeeting from the FreeRide, dial the phone number you chose. The FreeRide is basically configured the same way to make calls to any H.323 standards compliant endpoint.

To call a FreeRide telephone from NetMeeting, simply dial it's IP address.



## CONTACTING TECH SUPPORT

In order to receive quality, and timely service please provide tech support with appropriate information so that we may help you to get up and running as quickly as possible. To contact tech support send email to [tech\\_support@e-telcorp.com](mailto:tech_support@e-telcorp.com), with a detailed description of your situation, and an attached debug file (see Settings and Support for help on making a debug file). We appreciate any information you may provide, so that we may provide you with the highest level of service.

Sincerely,  
[tech\\_support@e-telcorp.com](mailto:tech_support@e-telcorp.com)