



Provides Easy Manageability

Intel® Platform Administration Technology

Version 3.0

All-in-one Solution
Easier to Use
Better Security
Higher Performance

Intel® Platform Administration Technology (Intel® PAT) Provides Easy Manageability Designed to Maintain Clean and Stable Systems in a Network Environment

Smaller networks, especially those without a dedicated IT management team, can often be challenging to IT administrators. Installing and upgrading applications over multiple PCs, one at a time, is a slow process. Trouble-shooting usually involves time-consuming desk-side assistance, while routine maintenance and asset management can be equally labor intensive. But now, Intel® Platform Administration Technology (Intel® PAT) has changed all that.

Intel® PAT provides easy manageability designed to maintain clean and stable systems in a network environment. Its main target is PCs in small and medium sized networks such as those in internet café's. This all-in-one solution is easy to get and just included in Intel® PAT enabled motherboards. It has manageability features specifically designed to save owners time and money. These features are designed to deploy software, protect systems, and manage end user services.

Intel® PAT is based on the Intel® Innovation Framework for EFI, including motherboard technology components, BIOS components, and Intel® PAT software (includes Image and Asset Management Package, Client Hard Disk Restore Package & Content and Service Management Package). The newest version Intel® PAT 3.0 also brings great user experiences through easy game and content management.



How Intel® PAT Adds Value

- 35% reduction in time spent on PC troubleshooting and maintenance
- 86% reduction in time spent on upgrading software
- 78% reduction in cost of maintenance
- **\$102.67** reduction in per/PC maintenance costs

Source: 6-month pilot at BigCafé Hongqiao Shop in Shanghai

Intel® PAT saves money by reducing maintenance, improving scalability and lowering total cost of ownership

Intel® PAT 3.0 Competitive Analysis

— Compared with Intel® PAT, competitors focus on subset of total solution

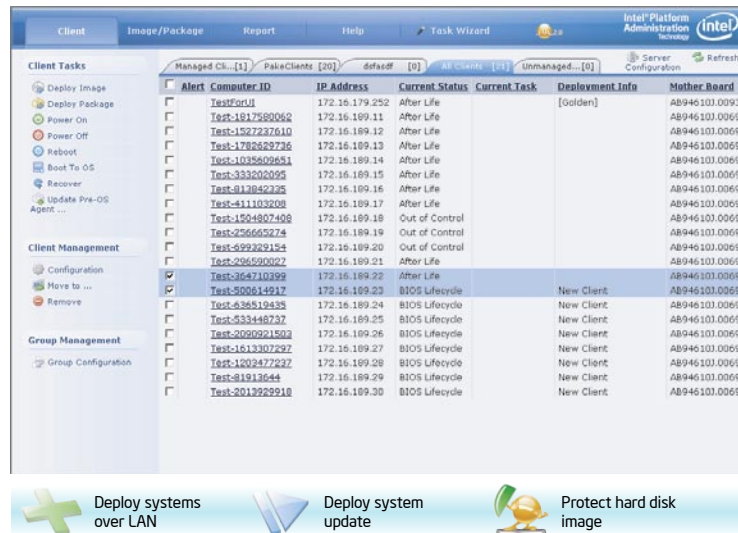
| | Intel® PAT 3.0 | Hard disk protection card | Hard disk protection software | Content management & advertisement |
|--------------------------------------|----------------|---------------------------|-------------------------------|------------------------------------|
| Deploy systems over LAN | ✓ | ✓ | | |
| System update | ✓ | ✓ * | | |
| Protect hard disk image | ✓ | ✓ | ✓ | |
| Asset management | ✓ | | | |
| Content management | ✓ | | | ✓ |
| Service management | ✓ | | | |
| Advertising & end user communication | ✓ | | | ✓ |

*Most of the hard disk protection card can only deploy the whole disk/partition instead of the software update packages

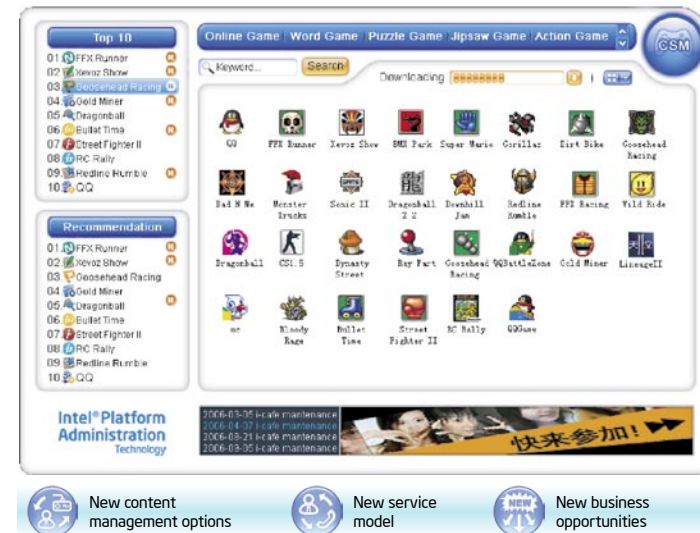
Intel® Platform Administration Technology Software is the key component of Intel® Platform Administration Technology to deliver the client and server functionalities. The package includes the following:

- **Image and Asset Management Package**
- **Client Hard Disk Restore Package**
- **Content and Service Management Package**

Intel® PAT 3.0 Server Side



Intel® PAT 3.0 Client Side



Intel® PAT 3.0 New Features

All in One Solution

- Integrated, most up to date HW/SW Technology
- Comprehensive features: Deployment, HD restore, Manage content/assets,
- New CSM - Game management administrator service, advertisement

Easier to Use

- Simplified Server Console interface - "client group management"
- Flexible Modular install - "install what you need"
- Simplified game installment/upgrade - "one time upgrade, all clients share"
- More convenient administrator service - "one button service, VOIP communication"

Enhanced Security

- Enhanced HD protection algorithm - "enhanced security"
- Monitor assets anywhere - "receive status reports on any client"
- Mischievous program detection* - "keep network secure"

Higher Performance

- Intel® Core™2 Duo optimized! - built on multi-threaded architecture
- New deployment algorithms - improved deployment speed
- Enhanced HD restore algorithm - Lower system resource cost

*Some functions might be available in later versions

Intel® Platform Administration Technology:

Simple Manageability designed to...

| Deploy | Protect | Manage |
|--|---|--|
| <ul style="list-style-type: none">• OS Setup: Simply deploy images even before booting up clients• Application Updates: Easily broadcast packages to selected groups of clients | <ul style="list-style-type: none">• Hard Disk Restore: Every reboot restores back to original hard disk image• Asset Management: Identify hardware and software configurations through reports | <ul style="list-style-type: none">• Content Download: Client console allows users to organize and pull applications from server• End-User Interaction: Provide messaging, advertising and service call options to end-users |

...easily maintain clean and stable systems in network environment - reducing maintenance, lowering TCO



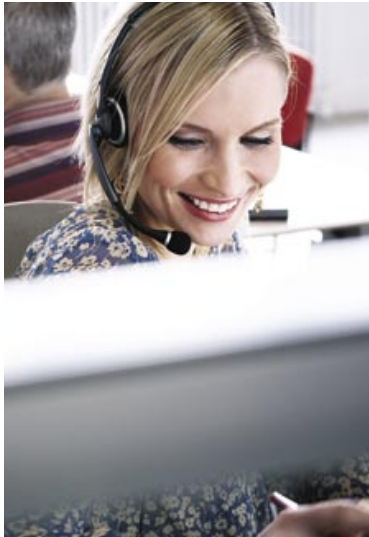
New Content & Service Management Module Brings You

- New Client-user interface
- New Game Management Options
- New Service Model
- New User Experience

| Feature | Description | Value |
|--------------------|---|---|
| Content Management | Client/Server mode game provisioning system in LAN | <ul style="list-style-type: none">• Better client hard disk space utilization• Easier game management in LAN environment |
| | Client/Server mode message/ads broadcasting | <ul style="list-style-type: none">• Introduction of new revenue source to network owners |
| Service Management | OS application based service requesting, responding and assessment system | <ul style="list-style-type: none">• Easier and faster service request and response through software button click and/or real-time VoIP communication in LAN environment• Auditable service control system help small & medium size network owner to assess, identify and improve service quality |
| System Protection | System level malicious application detection and termination | <ul style="list-style-type: none">• Protect system data from damages caused by malicious application* (e.g. billing system cracker) |
| | Automatic hard drive space reclaim | <ul style="list-style-type: none">• More stable system and smoother user experiences |

**Some functions might be available in later versions*

Intel® PAT Worldwide Expansion



"With less PC downtime and faster software upgrades, we are able to serve our users with increased added value for less cost."

Kerem Irgan -
Owner, Adeks Café.



Intel® PAT is currently available in several countries: PRC, Korea, Malaysia, Thailand, Vietnam, Indonesia, Turkey, Russia, Egypt, and will continue to expand internationally.

Intel® PAT in Action

Case Study - Adeks i-Café, Istanbul, Turkey

Adeks internet café has more than 150 PCs, 70 of which are based on Intel® PAT. Adeks declares that without IPAT, installing software updates takes days for 80 PCs. With Intel® PAT it takes just 3 hours for the same number of PCs. On system updates, the single server is able to control almost all operations on clients, including network ID modification and software update package deployment.

Case Study - MIET University, Omsk, Russia

Students often need Sysadmin rights to launch certain client-server applications needed for efficient learning. However this can lead to OS failure, requiring up to six hours to restore. Intel® PAT reduces the time for deployment for any number of PCs to just 10 to 15 minutes, providing reliability, stability and manageability for the network.

"Intel® PAT will make it much easier for us to fulfil our plans within the framework of innovative education."

Alexandrovich Chaplygin -
President, Moscow Institute of
Electronic and Engineering.

Case Study - BigCafé, Shanghai, China

BigCafé Hongqiao Shop is a flagship store of Shanghai Bowen Co.Ltd. located in Shanghai, China. Bowen holds an official i-Café franchise license from the Ministry of Culture of PRC, Bowen has accumulated more than twenty franchises and directly-owned i-Cafés.

"3.0's UI is more user-friendly, the newly added **wizard function** could lead you through all the major operations step by step. It's really easy to follow!"

It also added a new package called **Content and Service Management package**, which could easily help the IT admins to manage the content and end users services."



YuanQuan,
Technical Department
Manager, BigCafé

Know More Information about Intel® PAT

Where can I find more information about Intel® PAT?

Find Intel® PAT official website: <http://platformadmintech.intel.com/> for the latest product information. The newest Intel® PAT 3.0 is supported by Intel® D946GZAB desktop motherboard.

What hardware and software is compatible with Intel® PAT?

To avoid additional investments and difficulties for IT administrators, Intel has considered compatibility conflicts of Intel® PAT with other hardware and software. In fact, Intel® has validated different hardware on Intel® PAT and tested software. For more information, please refer to the compatibility documentation on our support website.

[Http://support.intel.com/support/performance/tools/manage/ipat/index.htm](http://support.intel.com/support/performance/tools/manage/ipat/index.htm) --> Compatibility Knowledge Base

Do customers need to upgrade their existing hardware or software in order to use Intel® PAT?

For hardware, check your PC configuration first. If it's an Intel® PAT enabled desktop motherboard (D865PCK, D915PDT, D945PLNM, D946GZAB, 865G-M8.), install Intel® PAT from the CD which comes along with the motherboard, or simply download it from the Intel® PAT website. If not, you may purchase an Intel® PAT enabled motherboard through any Intel® authorized distributors, or product dealers.

As for software, Intel® PAT is continually being verified and validated with almost all mainstream software.

Can I buy Intel® PAT from my region?

Intel® PAT is currently available in PRC, Korea, Malaysia, Thailand, Vietnam, Indonesia, Turkey, Russia, Egypt, and will continue to expand internationally. If you would like to purchase Intel® PAT, contact your regional Intel® Authorized Resellers.

Does Intel® PAT cause software licensing issues, given that it deploys an image to multiple PCs?

Along with other deployment features, the responsibility is up to the user to obtain a licensing agreement for copyrighted software.

Will Intel® PAT be aligned in future Intel Architecture products?

Yes, Intel® PAT was introduced in 2005, and continues to be improved and expanding to other geographies. Intel® has plans to offer more products down the line featuring Intel® PAT.

Is Intel® PAT 3.0 compatible with Intel® PAT 2.0?

Intel® PAT 3.0 can exist on the same server with Intel® PAT 2.0. If your environment will have both D945PLNM (Intel® PAT 2.0) boards and D946GZAB (Intel® PAT 3.0) you must run both server applications concurrently. Although you only need one server, the server agent is only able to see its' own respective clients. Meaning, Intel® PAT version 2.0 is needed to manage D945PLNM, D915PDT boards, whereas Intel® PAT version 3.0 is needed to manage D946GZAB boards. However, the CSM package is completely compatible with all Intel® PAT enabled boards and only one instance of CSM is needed for full functionality.

What is the function of the Content and Service Management Package (CSM)?

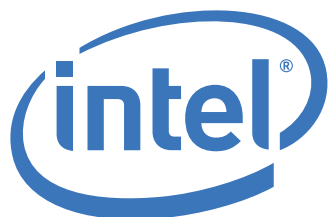
CSM is a customized value added solution for network environments. Its functions include

Content Management (Easily organize, install, upgrade games)

- Client can double click to install, from any client PC in network
- Content stored on a central server with on-demand downloads

Service Management (Increase communication with client)

- VoIP voice communication from client to Administrators for fast service and support
- Centrally managed advertising banner seen by all end users on client side*
- Send customized messages to targeted customers*



For more information or cooperation, please contact Intel Account Manager or visit:
<http://platformadmintech.intel.com> or send e-mail to: platformadmintech@intel.com

Information in this document is provided in connection with Intel products. No license, express or implied, by estoppel or otherwise, to any intellectual property rights is granted by this document. Except as provided in Intel's Terms and Conditions of Sale for such products, Intel assumes no liability whatsoever, and Intel disclaims any express or implied warranty, relating to sale and/or use of Intel products including liability or warranties relating to fitness for a particular purpose, merchantability or infringement of any patent, copyright, or other intellectual property right.

Intel products are not intended for use in medical, life-saving or life-sustaining applications. Intel may make changes to specifications and product descriptions at any time, without notice. All products, dates and number specified are the initial results according to current expectation for planning purposes only and are subject to change without notice. The release time of products in different channels may be various.

Copyright © 2006, Intel Corporation. All rights reserved. Intel, the Intel logo, Intel Leap ahead, Intel Leap ahead logo, Celeron, Celeron logo and Pentium, Pentium logo are trademarks or registered trademarks of Intel Corporation or its subsidiaries in the United States and in other countries.

*Other brands and names may be claimed as the property of others.