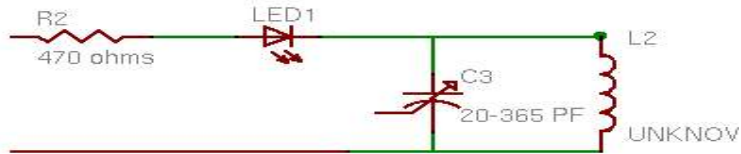


Quick Inductance Measurement Method

Here is a quick way to determine the value of that unknown inductor. All you need is a source of RF at about 8 to 10 Volts, an LED, and a variable capacitor.



Connect your RF source to the left side of this circuit and tune the variable capacitor for a dip in the LED brightness (look close, some LEDs do not show much light output).

Then measure the capacitance and the frequency of the input signal, and calculate the value of your inductor. This goes much faster if your capacitor has a dial that is calibrated in picofarads.

K7HKL